

The Dirt Digger

News from
12d Solutions



Welcome

...to the **July 2010** issue of the **Dirt Digger**.

We are constantly reviewing and improving our administrative processes; product and company communications; and last but certainly not least, 12d Model itself.

In this issue we will look at:

- **Case Study: Jabal Khanadama Development - Mecca.**
- **Winner: 'Sales Region of the Year'**
- **An in-depth look at the '12d Model International User Conference 2010'**
- **More Power To Super TINs**
- **New LINZ Support**
- **Subsurface Utilities Engineering**
- **Latest Brochure Download Links**

With so much happening we are struggling to keep 'The Dirt Digger' to only 4 pages. Rest assured that as news breaks we will keep you posted via email.

Regards,

Dr Lee Gregory

Mr Alan Gray

Managing Director

Technical Director

lee.gregory@12d.com

alan.gray@12d.com

Sales Region of the Year

It's official – Queensland is 12d Model's number one sales region again. This victory was announced at our Conference in March, and was met with no great surprise overall...they just keep doing it!

Financial Year 2008/2009 was another successful sales year overall for 12d Model, despite the Global Financial Crisis, but this success was reflected particularly keenly in Queensland.

A big 'thank you' goes out to all our loyal customers, and a big 'welcome' to all our newcomers.

Case Study: Jabal Khandama Development - Mecca

Outline:

This case study is based on the **urbanisation project** covering 60 ha in the immediate neighbourhood of Mecca and is estimated to cost over US\$3 Billion.

The site is on the western side of **Khandama Mountain**, which overlooks the **Holy Mosque of Al-Haram** and the royal palaces.

The proposed development includes a range of hotels, seasonal services, permanent residential apartments and retail shopping complexes. It creates efficient and safe pedestrian links to the Holy Mosque and complements the surroundings of the Al Haram.



Background:

Buro Happold was commissioned to produce **Earthworks, Road Design** and to create a **3D landform model** for master planning.

Other services included **utility coordination** and **geo-technical studies**.

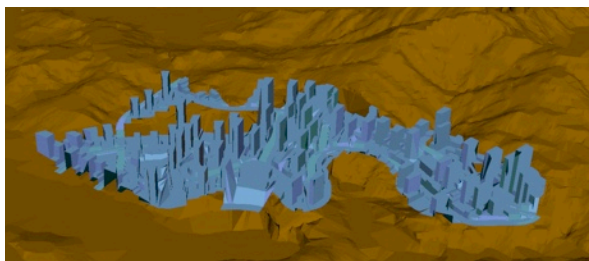
Due to the extremely high number of Muslims that visit the Al-Haram, be it for the **annual pilgrimage** to the Holy Mosque (during **Ramadan**) or simply for daily prayer, there has become a need for long-term accommodation in the adjacent mountains.

Khandama, with a prime location looking down onto the Mosque, is ideal for both visitors and investors.

Methodology:

As the project is at the **master planning stage**, some of the design was of high-level and therefore did not require too much detail.

...Continued Next Page



The topography required a **detailed 3D model** to **understand the site's constraints**, as well as the complexity of the project.

12d Model was used to create both an **earthworks tin**, and a finished **surface tin**.

With height differences across the site of up to 120m, both the **Architects** and **Engineers used this model** to help with the design.

Issues:

A number of issues were evident before the actual project began; **main points are as follows:**

- The **sheer volume of people who visit Mecca**. Access is required to and from the holy mosque all year round.
- The **steepness of the site**. Levels varied so much that rock cuttings of up to 50m are required in the design. This also leads to a huge amount of excavation.
- A **number of road tunnels exist underneath Khandama Mountain**. A minimum clearance of 14m must remain to avoid any damage from foundations.
- **Existing watercourse** running under the proposed site (holy water).

Saudi Highway Standards state that no road shall have a maximum grade of more than 8%.

This became an issue right from the planning stage, with existing slopes of up to 40%.

12d Model helped determine the best alignment for each road to keep within these strict guidelines.

Proposed access to the hotels / apartments will be through a number of roads and pedestrian radial spines.

These spines, facing in the Al-Haram direction, will give pedestrians **free-flowing access** to the mosque and provide a safe environment – something that is lacking at present.

An existing river runs beneath Khandama Mountain. This river contains holy water, known as **Zam Zam water**. The water is extremely sacred in this area, and thus no buildings works are to affect it.

For this reason, and because of the location, a maximum excavation level was adopted to prevent any such contamination.

Accreditation:

Created by: **Andrew Paterson**
 Position: **Senior Civil Designer**
 Company Name: **Buro Happold**
 Company Location: **London, United Kingdom**
 Website: www.burohappold.com

The 12d Model International User Conference 2010

Our latest 12d Model International User Conference, which was held on **7th, 8th and 9th March 2010** at the Brisbane Convention and Exhibition Centre (BCEC), Queensland, turned out to be another great success.

Over **400 people attended** over the course of the three days! Conference delegates were given a wealth of opportunities to interact with 12d Solutions staff and other experienced 12d Modellers, with benefits expressed to us by many.

Thank You To Our Presenters And Sponsors

A huge 'thank you' goes out to all those who presented papers which covered all areas of surveying and civil design – your contributions were such an important part of making the Conference a success.

Also a special 'thank you' to our wonderful sponsors – **Brown Consulting, XP Software** and **Dalton Consulting Engineers (DCE)**.

V10 Sneak Previews

12d Model 10 is now entering the **Beta** stage and a number of exciting developments were shown at the conference including:

- **Dynamic GIS Interface** where presenters hooked up live to ARC GIS systems in Bundaberg and St Paul (USA) to obtain background photos and data directly from the GIS systems.
- **Timelines** – moving vehicles, trains and planes can now be part of 12d Visualisations, and also used for construction sequencing and traffic simulations.
- **Design Components** provide libraries of intersection and roundabout objects for quick insertion into a design in both 2D and 3D.
- **12d Field Pickup** provides the ultimate approach to survey data collection with 12d's unique hierarchical attributes with simple-to-manage coding, templating and instrument control, all in the field.

Conference Evaluation Surveys

Thank you to those who have already submitted Conference Evaluations. The feedback so far has been almost invariably positive.

We will endeavour to utilise as many user suggestions as possible in our planning for the 12d Model User Conference 2012 (plans are already underway!), **so please keep those Evaluations coming.**



...Continued Next Page



Dinner & Entertainment

The three-course Conference Dinner was held in BCEC's Plaza Ballroom. This was an excellent venue, conveniently located within the Centre.

A special thanks must go to our performer, **The Space Cowboy**, who not only wowed the audience with his amazing and death-defying stage routine, but also spent time after his show doing close-up performances with audience members up the back of the room, whom he feared might not have been able to see his act adequately.

Excerpts from his performance will be on the **Conference DVD** which is currently in production.

Birds Of A Feather - Users' Vote of Approval!

One recurring suggestion from delegates in the past was that we devote more time to the daily 'Birds of a Feather' sessions, so we allocated **two hours per day** to them at this Conference.

For those who haven't attended a 12d User Conference, these sessions involved **breaking into smaller groups** so attendees can attend any of the six **special tutorials**, or wander from **stand to stand** asking more detailed questions about any aspect of 12d Model, or about other products or companies on display.

Stands included **Queensland Transport And Main Roads, BricsCAD, CatchSim, CR Kennedy (Leica), Forum8 (Visualisation), Global Pos (Javad), Pacific Data Systems (radios & tablets), Position Partners (Topcon), Sitech Solutions (Trimble) and XP Software.**

We can't wait to see you at the next Conference in 2012.

Super TIN Functionality Extended with V9C1d

A **unique feature** of 12d Model is the Super TIN, which **allows surfaces to be dynamically combined** so if one or more of the surfaces change, the Super TINs automatically update.

The powerful Super TINs worked with many 12d Model options but in **Version 9 C1d**, Super TINS support has been extended to almost every option including exact volumes, contouring, and visualisation.

TAKE ADVANTAGE & UPGRADE TODAY!

New LINZ Support

Monday 24th May 2010 was another big day for **Land Information New Zealand's** Landonline and New Zealand's Cadastral surveyors, with the introduction of the new **"Rules for Cadastral Survey 2010"**. The days prior to this date found surveyors frantically trying to get all their surveys into Landonline before the roll-over. With no live testing facilities available beforehand, Monday was always going to be interesting to say the least.

12d Solutions produced a full working version on time and our Users starting testing this out from the earliest possible moment. The rules required a new LandXML version (V1.2), enumeration changes, new checks and mappings, which all had to lodge as seamlessly as our Users have come to expect.

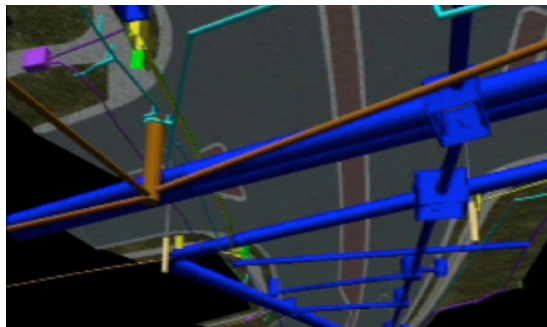
The first week was eventful but very smooth for 12d Model, with some of the first Landonline plans being lodged via the **new 12d Model interface.**

Subsurface Utilities Engineering (SUE)

With its powerful modelling capabilities and instant visualisation, 12d is at the forefront of the exciting new area of **subsurface utilities engineering**, or **SUE** for short.

12d Model easily combines data from paper records, GIS systems, outputs from the new generation of location devices and 12d surveys to produce 3D subsurface utility models for use by 12d designers.

When construction begins, 12d Field not only sets out the design and new utilities, but can record **the actual position of all the new works to provide continual clash warnings for future works.** So, redesigns can be done to avoid problems rather than expensive onsite reworks.



Latest Downloads - Brochures

[Utilities & Urban Drainage](http://12d.co.uk/download_file/view/190/)

[Survey](http://12d.co.uk/download_file/view/190/)

[12d Field](http://12d.co.uk/download_file/view/187/)

[Earthwork & Volume Analysis](http://12d.co.uk/download_file/view/185/)

[Earthwork & Volume Analysis](http://12d.co.uk/download_file/view/183/)

[Earthwork & Volume Analysis](http://12d.co.uk/download_file/view/183/)

[Earthwork & Volume Analysis](http://12d.co.uk/download_file/view/183/)

[Earthwork & Volume Analysis](http://12d.co.uk/download_file/view/183/)

SALES & SUPPORT AUSTRALIA

NSW, ACT & SA

Tony Ingold
Extra Dimension Solutions
tingold@exds.com.au
Ph. (02) 9452 6771 (sales)
Ph. (02) 9453 9449 (tech)

WA - Design

Maria Bernhagen
Critical Image
criticalimage@bigpond.com
Ph. 0412 559 019

WA - Survey

Graham Wirth
graham.wirth@12d.com
Ph. (02) 9970 7117

VIC

Matt Stephens 12d Solutions
vic12d@gmail.com
Ph. (03) 9530 2753

QLD & NT

12d Solutions
Ph. (02) 9970 7117 (sales)
qld.sales@12d.com

UK, EUROPE, MIDDLE EAST & AFRICA

Joel Gregory 12d UK
joel.gregory@12d.co.uk
Ph. +44 (0) 845 051 372

NEW ZEALAND

Lane Irwin 12d NZ
lane@12d.co.nz
Ph. +64 27 477 7787

USA & CANADA

Lori Abbey
XP Software
lori@xpssoftware.com
Ph. +1 (888) 554 5022

ASIA

Phil Davies 12d Asia
phil.davies@12d.com.sg
Ph. +65 9026 0402

JAPAN

Anita Byrnes Forum8
anita@forum8.co.jp
Ph. +61 2 9130 1448

MALAYSIA - Design

Caruppaiya Natarajan
Astasoft
caru@astasoft.com.my
Ph. +60 3 8075 6133

FIJI

Kevin McConell Lukemine Enterprises
lukemine@connect.com.fj
Ph. +679 337 0858

Welcome Aboard...apologies we have a back log & we are endeavouring to list all clients.

- 3D Consultants – Bangladesh
 3D Engineering Surveys Pty Ltd – Qld
 4M Civil – WA
 Abigroup Contractors Pty Ltd – NSW, Qld, Vic
 Acor Consultants Ltd – NSW
 Acor Baseline Consultants Pty Ltd – NSW, Qld
 ADW Johnson – NSW
 AECOM – ACT, NSW, Qld, SA, Vic, WA; NZ; UAE
 Ahern James Naismith Surveyors – Qld
 Akiyama Yuabisu Construction Co. Ltd – Japan
 Al Futtaim Carrillion – UAE
 Al Jaber Construction – UAE
 All Surveys – Qld
 Alluvium Consulting – Qld
 Aman Manusia Sdn Bhd – Malaysia
 Arabian Investments – Oman
 Arup – NSW, Qld, Vic; London
 Aspect Infrastructure Design Limited – UK
 ASR Ltd – NZ
 Asset Mapping and Surveying – NSW
 Aurecon Group – Brisbane, Perth; NZ; UAE
 Aurum Survey Consultants Limited – NZ
 Ausenco – Qld
 Australian Defence Force – Afghanistan
 Australian Water Environments – SA
 AWJ Earthmoving – NSW
 Ayson & Partners – NZ
 B T W South Ltd – NZ
 Bangkok Metropolitan Administration – Thailand
 Bankstown City Council Civic Design Services – NSW
 Barlow Gregg VDM Pty Ltd – Qld
 Barwon Water – Vic
 Bass Coast Shire Council – Vic
 BCL Surveyors Ltd – NZ
 Beasley and Burgess Surveyors Ltd – NZ
 Beca Infrastructure Ltd – NZ
 Belhasa Six Construct LLC – UAE
 Bennett and Bennett – Qld
 Bereza Civil Surveys – ACT
 Beveridge Williams – Vic
 BG & E Consulting Engineers Pty Ltd – WA
 BGC Contracting Pty Ltd – Qld, WA
 Bhutan Power Corporation Limited – Bhutan
 Bill Guy & Partners – ACT
 Black and Veatch – UK
 Black Creek Engineering Surveys – NSW
 Blackman Surveyors Limited – NZ
 Blacktown City Council – NSW
 Bland and Howarth Ltd – NZ
 Bloxam Burnett and Olliver Ltd – NZ
 BMD Group – Brisbane, Sydney, Townsville
 Bodley Brothers Ltd – NZ
 Bonacci Group Pty Ltd – Qld, Vic
 Boyd and Moore Pty Ltd – Qld
 BPA Engineering Pty Ltd – WA
 Brandon & Associates Pty Ltd – Qld
 Breese Pitt Dixon – Vic
 Brisbane City Council – Qld
 Brisbane City Works – Qld
 Brock & Associates – Qld
 Broome Survey Services – WA
 Brown Consulting (Aust.) Pty Ltd – ACT, NSW, Qld, Vic
 BRR Nias Selatan – Indonesia
 Buckton Consultants Ltd – NZ
 Bundaberg Regional Council – Qld
 Burchill VDM Pty Ltd – Qld
 Buro Happold – London, Glasgow
 Cairns Regional Council – Qld
 Calibre Projects Pty Ltd – Qld, WA
 Calibre Rail Pty Ltd – Qld, WA
 Consult Maunsel AECOM – UAE
 Capita Symonds – UK
 Cardno – NSW, Qld, NT, Vic, WA; NZ; UAE
 Cato Bolam Consultants Limited – NZ
 CB Constructions – Qld
 Central Goldfields Shire – Vic
 Central Japan Railway Company – Japan
 Central Surveys Ltd – NZ
 CH2M Hill – NSW
 Charles O'Neill Pty Ltd – Qld
 Charters Towers Regional Council – Qld
 Cheal Consultants – NZ
 Christchurch City Council – NZ
 Christchurch Polytechnic Institute of Technology – NZ
 City of Charles Sturt – SA
 City of St Paul Public Works – USA
 Civil Contractors (Aust) Pty Ltd – Qld
 Civil Dimensions Pty Ltd – Qld
 Civil Engineering and Construction Surveys – Qld
 Civil Services (HB) Ltd – NZ
 CKL Surveys Limited – NZ
 Clarence Valley Council – NSW
 Clark Fortune McDonald & Associates Ltd – NZ
 CLC Consulting Group Ltd – NZ
 Clough Engineering Ltd – Qld
 CMS Surveyors – NSW
 Coalville Surveying – Vic
 Coastwide Surveys Ltd – NZ
 Coffs Harbour City Council – NSW
 Coleman Engineering Services – ACT
 Complete Urban Pty Ltd – NSW, Qld
 Construction Geomatics Pty Ltd – Qld
 Consulting Engineers Group – India
 Contour Surveys – NZ
 Cook Shire Council – Qld
 Cossill and Webley – WA
 Covey & Associates Pty Ltd – Qld
 CPG – Vic; NZ
 Cross Geomatics Pty Ltd – Qld
 Cross Roads Civil Design – NSW
 CSC Consulting – Qld
 CSM Group Pty Ltd – Qld
 CTC Surveys Ltd – NZ
 Currahee Solutions – NSW
 Custom Spatial Solutions – SA
 Cuttriss Consultants Ltd – NZ
 Dalby Regional Council – Qld
 Dalton Consulting Engineers – Vic
 Daniel Di-Mattina – Qld
 Dar Mazen Al-Sane Engineering Consultant – Kuwait
 Darwood Engineering Consultancy – Sultanate of Oman
 Davie Lovell Smith Ltd – NZ
 Davorin Zivkovic – Vic
 Decmil Australia Pty Ltd – WA
 Demeyne Aviation – ACT
 Dennis Price and Miller Pty Ltd – Vic
 Department of Defence (Army) – NSW
 Department of Infrastructure, Planning and Land Services – WA
 Department of Military Works – UAE
 Department of National Roads – Fiji
 Department of Works – Papua New Guinea
 Dinas Bina Marga Kab, Purwakarta – Indonesia
 DKS Consulting – Qld
 D.M. Rosborough Drafting Services Pty Ltd – Qld
 Downer EDi Works Pty Ltd – Qld, WA
 DPI – Construction Division NT – NT
 DTEI – SA
 Dubai Gulf Contracting LLC – UAE
 Dubai Men's College (Higher Colleges of Technology) – UAE
 Dubbo City Council – NSW
 Dungog Shire Council – NSW
 Earl Covington & Associates – Qld
 Easdale Surveyors Ltd – NZ
 Energy Surveys – NZ
 Engenium Pty Ltd – WA
 Engineering and Mapping Surveys Pty Ltd – Qld
 Engineering Surveys – SA
 Environment Canterbury – NZ
 Ergon Energy – Qld
 ESO Surveys – NSW
 Etec Consultants – WA
 ETS Group – Qld
 Eurobodalla Shire Council – NSW
 Expedition Engineering – UK
 Farr Engineers Associates Pty Ltd – Qld
 Fletcher Construction Company Ltd – NZ
 FMG Engineering – SA
 Forbes-Brown Civil Limited – NZ
 Fredriksen MacLean & Associates – Qld
 Friedman Wilson Surveying – Qld
 Froggyz Limited – NZ
 Fyfe Pty Ltd – SA
 GEO Image Services – NSW
 GeoMatic Surveys – NZ
 GHD – Brisbane, Melbourne, Perth; Qatar
 Gladstone Regional Council – Qld
 Gold Coast City Council – Qld
 Graeme Wyld – NZ
 GRD Minproc Limited – Qld, WA
 Griffith City Council – NSW
 Griffith University – Qld
 Haigh Consultants Ltd – NZ
 Halcrow – Qld; Qatar
 Halls Fripp Surveying – Qld
 Hard and Forester – NSW
 Harper Somers O'Sullivan – NSW
 Harrison Contracting Limited – NZ
 Harrison Grierson – Auckland, Manukau, Parnell, Tauranga (NZ)
 Hatch Associates – Qld; New Caledonia
 Hawker Moss Surveyors – WA
 Hendriks House – Qld
 Henwood Consulting Engineers – Qld
 Hervey Bay City Council – Qld
 Hick Bros Civil Construction Ltd – NZ
 Horizon Surveys Pty Ltd – WA
 Housing Authority – Fiji
 HPSurvey – WA
 HSS Engineering Sdn Bhd – Malaysia
 Hughes & Associates – NZ
 Hunt8r Alliance (John Holland) – NSW
 Hutch Engineering Surveys Pty Ltd – Qld
 Hyder Consulting Pty Ltd – Qld
 Indonesia National Land Agency – Indonesia
 Intelara – Qld
 J. Wyndham Prince – NSW
 JDSi Pty Ltd – WA
 Jeff Brown Surveys – NSW
 JKR Negeri Kelantan – Malaysia
 John Fillmore Contracting Ltd – NZ
 John Holland Group – NSW, Qld
 Jones Flint and Pike Pty Ltd – Qld
 JSA Consulting Engineers – UK
 J.T. Metro JV – UAE
 JTW Surveys Ltd – UK
 Kea Consultants Ltd – NZ
 Kellogg Brown and Root – NSW, Qld, WA
 Kempsey Shire Council – NSW
 Kerry Surveys – ACT
 Kevin Lonergan – NSW
 Khansaheb Civil Engineering LLC – UAE
 KLM Spatial – Vic
 KN Group – Qld
 Knobel Consulting – Qld
 Kolej Poly-Tech MARA, Kuantan – Malaysia
 Laing O'Rourke (BMC) Pty Limited – NSW
 Lamb and Molloy Ltd – NZ
 Lambert and Rehbein Pty Ltd – Qld
 Lanco Group – Vic
 Land and Marine Surveying Limited – NZ
 Land Dimensions Ltd – NZ
 LandLink Ltd – NZ
 LandPartners Limited – NSW, Qld
 Lands and Survey Department – Fiji
 Larsen and Toubro Limited – India
 LBS Engineers – Solomon Islands
 Leighton Abigroup JV – Qld
 Leighton Contractors – NSW, Qld; UAE; Indonesia
 Lendrum & Associates – NZ
 Leucor Enterprises Pty Ltd – Qld
 Local Government Engineering Services – NSW
 Locaters – NSW
 Logan City Council – Qld
 Lynton Surveys Pty Ltd – NSW
 McConnell Dowell – Vic
 McDowall Affleck Pty Ltd – WA
 Mackay Regional Council – Qld
 McMurtrie & Associates – Qld
 Main Roads Western Australia – WA
 Maranoa Regional Council – Qld
 Mark Clancy – Qld
 Martens & Associates – NSW
 Matteo Ascenzo Design Enterprises Pty Ltd – Vic
 MCM Design and Management – Vic
 Meinhardt – NSW, Vic
 MH Surveys – ACT
 Millar I Merrigan – Vic
 Mine Survey Services – WA
 Minstaff Survey Pty Ltd – Qld
 Moreton Bay Regional Council – Qld
 Monteath and Powys Pty Ltd – NSW
 MPA Surveying Pty Ltd – Qld
 MPN Consulting – Qld
 M/S MGM Consulting Engineers – Ethiopia
 MS Under Trading Co. – Pakistan
 Muir Associates – Ireland
 Murray Hislop Surveyors – NZ
 MWH – Qld; NZ
 Napier City Council – NZ
 National Survey Authority (Ministry of Defence) – Sultanate of Oman
 Newnham Karl Weir & Partners – NSW
 Nexalides – UAE
 NSW Department of Services, Technology and Administration – NSW
 O'Neill Surveying Ltd – NZ
 Ontrack (NZ Railway Corporation) – NZ
 Opus – Darwin, Toowoomba; NZ
 Ostwald Bros Civil Pty Ltd – Qld
 Pacific Engineering Surveyors – Qld
 Pacific Survey Pty Ltd – NSW
 Papuan Oil Search Limited – NSW
 Parsons Brinckerhoff – NSW, Qld, SA, Vic, WA; Philippines
 Paterson Pitts Partners Ltd – NZ
 Pattle Delamore Partners Ltd – NZ
 PDM Surveys – Qld
 Pire Surveying Ltd – NZ
 Portarlington Holdings Ltd – NZ
 Precision Enterprises Pty Ltd – WA
 Precision Survey Group Pty Ltd – NSW
 Price and Myers – UK
 Pritchard Francis Pty Ltd – WA
 Pritchard Group Ltd – NZ
 Probulid Civil (QLD) Pty Ltd – Qld
 Projex North Pty Ltd – Qld
 ProSurv Pty Ltd – NSW, Qld
 PT BK Global Lestari – Indonesia
 PT Dhanar Mas Concern – Indonesia
 PT Kalimantan Citra Bara – Indonesia
 PT Kideco Jaya Agung – Indonesia
 PT Pama Persada Nusantara – Indonesia
 PT Saptaindra Sejati – Indonesia
 PT United Tractors Semen Gresik – Indonesia
 Pulver Cooper and Blackley – NSW
 Qld Department of Transport and Main Roads – Brisbane, Cairns, Nerang, Rockhampton, Toowoomba
 Quantum Limited – Vic
 Rak Ceramics – UAE
 Rand Surveys Pty Ltd – Qld
 Redland City Council – Qld
 RHM Consulting Engineers Pty Ltd – NSW
 Riley Consultants Ltd – NZ
 Rio Tinto – Qld, WA
 Roads and Traffic Authority – NSW
 Robert Bird Group – NSW, Qld; UK
 Rowen Meyer & Associates – Qld
 RPS – Brisbane, Cairns, Mackay, Sunshine Coast, Townsville
 Saba Engineering PLC – Ethiopia
 Schlenker Surveying – Qld
 SEE Civil Pty Ltd – NSW
 Selarl Michel Grand – New Caledonia
 SEMF Pty Ltd – Qld, Tas
 Shankland Cox – UAE
 Sheehy & Partners Pty Ltd – Qld
 Simon Byrne – NT
 Sinclair Knight Merz – Adelaide, Brisbane, Cairns, Melbourne, Perth, Sydney; Fiji; Guinea; NZ; UK
 Singleton Council – NSW
 Skanska UK PLC – UK
 SM Urban – Vic
 SMEC – NSW, Qld, SA, Vic, WA; Kuwait; UK
 SNC-Lavalin Australia Pty Ltd – Qld
 SNL Survey – Qld
 South Burnett Regional Council – Qld
 South Gippsland Shire Council – Vic
 Southern Land CKL Ltd – NZ
 SRWF Alliance JV – Qld
 Staig and Smith Ltd – NZ
 Stevenson Surveys Pty Ltd – NSW, Qld
 Stewart Group Ltd – NZ
 STP Consultants – Qld
 Stringer Surveys – Qld
 Structural Systems SA – SA
 Subdivisions (Qld) Pty Ltd – Qld
 Summer Regal Sdn Bhd – Malaysia
 Sunshine Coast Regional Council – Qld
 Survey 21 Pty Ltd – WA
 Survey of Pakistan – Pakistan
 Surveying The Bay Ltd – NZ
 Survtech – Qld
 Sydney Water – NSW
 TABEC – WA
 Tablelands Regional Council – Qld
 Tak Provincial Industry Office – Thailand
 Taylor Thompson Whitting (NSW) Pty Ltd Consulting Engineers – ACT, NSW
 Tenix Alliance Pty Ltd – Qld, Vic
 TGM Group – Vic
 Thai Military Development Division – Thailand
 The Otago Surveying Company Ltd – NZ
 The Project Centre – UK
 The Surveying Company – NZ
 Thiess – Hinze Dam Alliance – Qld
 Tincon Pty Ltd – NSW
 TMK Consulting Engineers – SA
 Tomkinson – Vic
 Tomlinson and Caruthers Surveyors Ltd – NZ
 Tonkin and Taylor Group Ltd – NZ
 Toowoomba Regional Council – Qld
 Townsville City Council – Qld
 TRN Group – NSW
 Twenty20 Surveys – WA
 United Water – SA
 URS – NSW, Qld, Vic; NZ
 Vassallo Constructions Pty Ltd – Qld
 VDM Group – Qld, WA; Vietnam
 Verve Energy – WA
 Wallbridge and Gilbert – NSW, Vic
 Water Technology – Qld, Vic
 Waterman Group – UK
 Wayne Davies – WA
 Werner Environmental, LLC – USA
 Westera Partners – Qld
 WestNet Rail – WA
 Whelans Survey and Mapping Group Pty Ltd – WA
 Whitsunday Regional Council – Qld
 Wilson Survey Group (Qld) Pty Ltd – Qld
 Wollongong City Council – NSW
 Wood and Grieve – Qld, WA
 Wood and Jepsen Consultants – Fiji
 Wood & Partners – NZ
 WorleyParsons – NSW, Qld, Vic, WA; Qatar; Saudi Arabia; UAE
 Yeoman & Associates Ltd – NZ
 Zektin Group – Qld
 Zorn Surveying Ltd – NZ