

AUTOCAD MAPPING FILES

1 V9 Tips on Utilising and AutoCAD Map File (.acadmf)

1. This note gives tips on how to:
 - Creating an .acadmf file
 - Exporting 12d data to a dwg/dxf
 - Creating standard AutoCAD linestyles and colours using a pre defined template
2. Before you start you need to
 - Have a 12d project with named strings
 - Have a CAD temple (*.dwt) prepared with customised layers and properties.

Note: A 12d NZ Ltd Map File (12d NZ V8 ACAD.acadmf) and CAD template file (12d NZ V8 TOPO.dwt) are available for users that do not want to start from scratch. These files have been created to be used in conjunction with the 12d NZ V8 TOPO.mf mapping file available for download from the 12d.com web site.

2 Create an acadmap file

From the main menu, under the File I/O select acad output map file.

The following panel will be displayed.

	12d Name	Acad Layer	Acad Colour	Acad Linestyle	Acad Textstyle	Acad Lineweight	Comment
1							

- 1 Enter a name for the Map File in space provided and select the Write button. This store the *.acadmf file into the project directory.
- 2 Enter data into each of the named cells to set how you want the 12d string data to be displayed in the dwg/dxf file.
- 3 12d Name: This is the name of the string in 12d Model you want the mapping applied to. This name is displayed in the second line when running string inquire.
Note: wildcards () and characters (!) can be used in the 12d string name.*
- 4 Acad Layer: This is the layer you wish any string with this name to be mapped to in the dwg/dxf file. Use BYLAYER for ACAD bylayer. Use * to use 12d Model model.
- 5 Acad Colour: Enter the ACAD colour number (between 1 and 256) you wish
- 6 the strings to take in the dwg/dxf. Use BYLAYER for ACAD bylayer. Use * to use 12d Model colour number.
- 7 Acad Linestyle: Enter the linestyle name you wish applied to the mapped strings. Use BYLAYER for ACAD bylayer. Use * to use 12d Model line style.

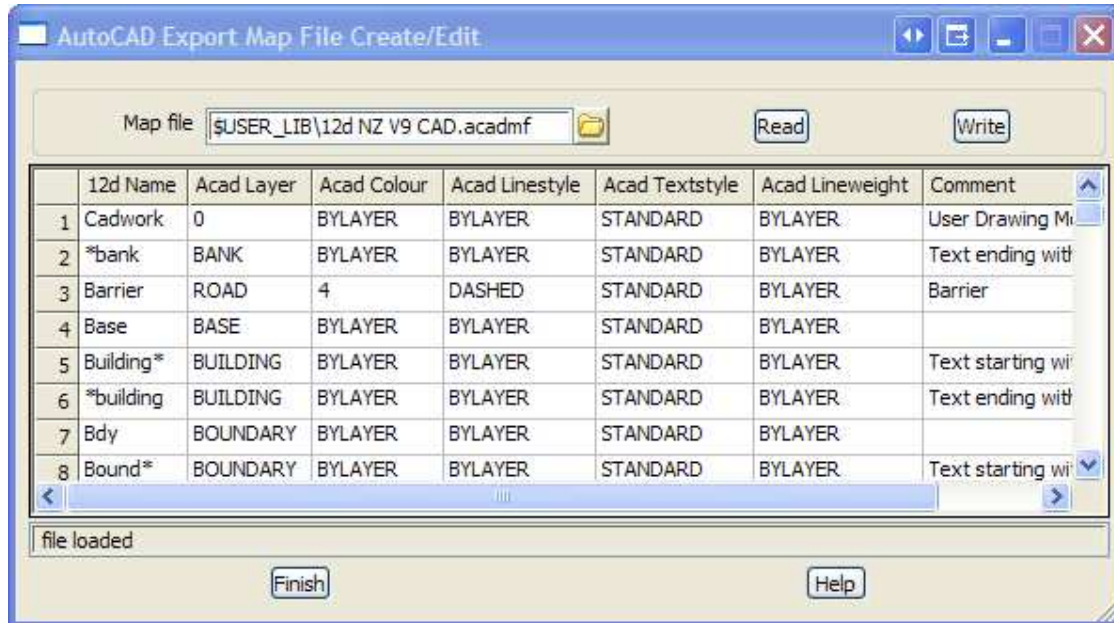
Note: the line styles available will be constrained by the line styles



available in the ACAD package.

- 8 Acad Textstyle: Enter the ACAD textstyle to be used on the mapped strings. Use * for 12d Model textstyles
- 9 Acad Lineweight: ACAD lineweight to use for the selected strings. Use BYLAYER for ACAD bylayer.
- 10 Select the Write button to save the changes to the Map File. Multiple rows can be added by using the Enter key or right clicking over the row header number on the left of the panel.

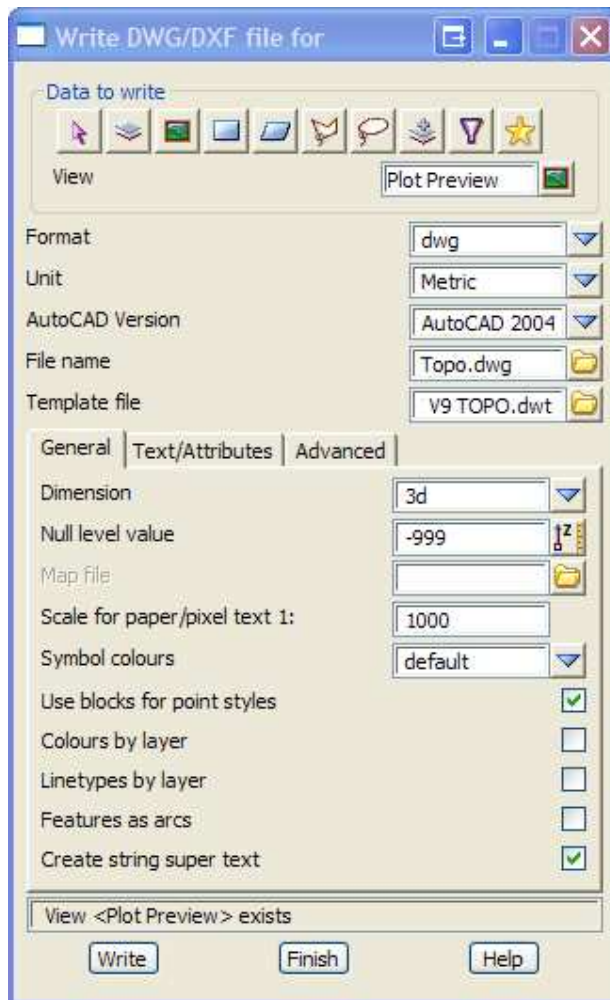
Example Map File:



Important Note: An AutoCAD template (.dwt) should be created that matches the Acad Layers specified in the Map File, along with custom layer properties set to ensure a consistent mapping of strings from 12d Model.*

3 Export using the Map File

From the main menu, under the File I/O select Data Output > DWG/DXF/DXB. The following panel will be displayed.



1. As normal, select the data source you wish to export to dwg.
2. Enter the export file name.
3. Under Template File, browse and select the AutoCAD template (*.dwt) file which coincides with the Map File.
4. Select the Dimension you want for the export.
Note: If you wish to display non-continuous AutoCAD standard line styles (i.e.dashed etc) you will have to select the 2d Dimension.
5. Select the Map file (*.acadmf) you wish to use to map the selected data source.
6. Write the export dwg/dxf.