

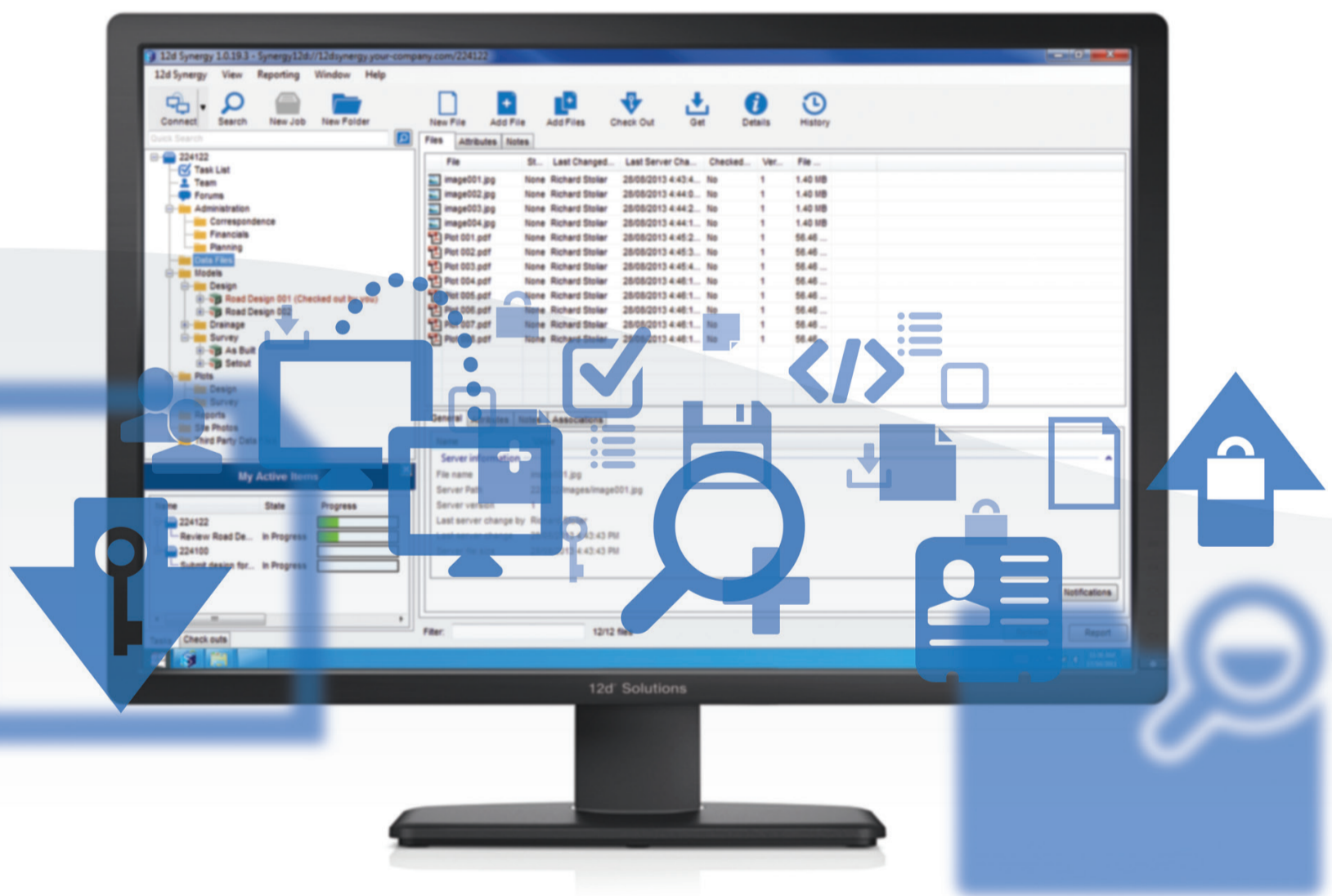


Data Management and Project Collaboration...Simply Easier

12d Synergy is a data management and project collaboration tool for Windows environments built for the Architecture, Engineering and Construction (AEC) industries.

12d Synergy is designed to work seamlessly with 12d Model Projects and other popular engineering applications.

12d Synergy is not just for the engineering office...it can be used to manage documents and content for practically any office and productivity application.



Why 12d Synergy?

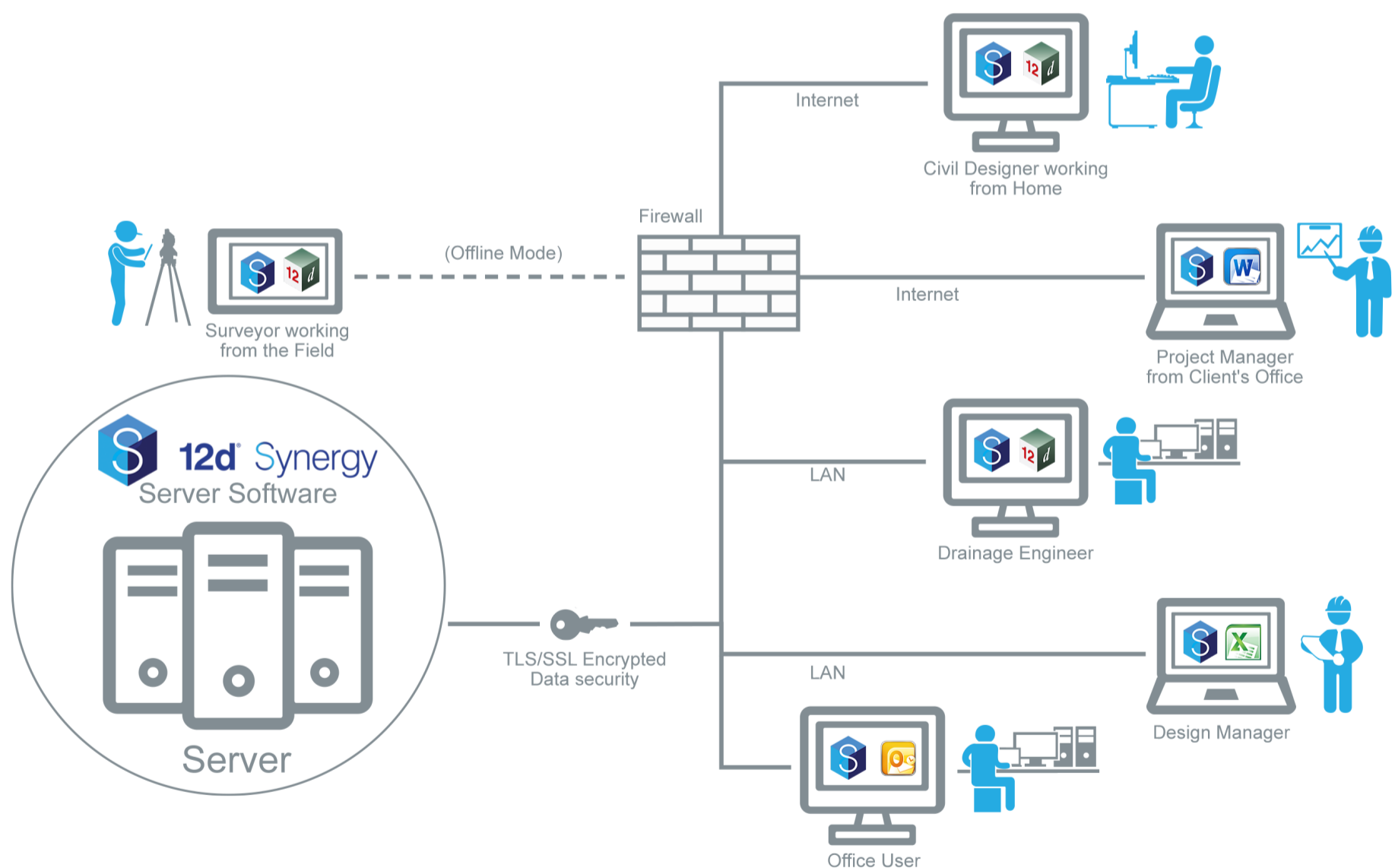
With over 20 years of experience developing engineering applications, such as 12d Model, we understand your workflows and business processes. 12d Synergy has been developed specifically with a business like yours in mind. We offer an affordable, flexible and easy-to-use solution which can be tailored to your specific business needs. 12d Synergy is the only solution on the market that manages 12d Model Projects and other folder based data sets. Imagine having one system where all your project data can be stored and controlled with collaboration tools; all AEC data is in one place, working together from a single source of truth... with 12d Synergy these benefits and many more can be yours.

Key features:

- o Data Management; keep track of how your AEC data changes
- o 12d Model Management; manage and work with your 12d Model projects seamlessly on and off site
- o Document Management; keep track of your office documentation and correspondence, directly from the Microsoft Office suite
- o Job Collaboration; model your business processes with tasks and get the right information to the right people on your team, when and where they need it

The 12d Synergy Landscape

Whether you're working in the office with 12d Model or Microsoft Word, or out on site, 12d Synergy can keep track of your data and make sure you always know what the rest of the team is up to.



Data Management

Every office has to deal with common problems; where is the latest copy of a document or data set, who changed your data last and why? AEC offices also have to deal with large data sets in many different formats, including data sets that span many files. Dealing with these problems can be challenging, which is why we built 12d Synergy!

12d Synergy eliminates these problems by:

- o Providing a single source of truth for all your data, removing the risk of working with old or duplicate data
- o Providing an audit trail of all changes, allowing you view or roll back to any previous version
- o Providing easy to use search tools to locate your data
- o Providing a unique ability to manage folder based data sets, unlike any other data management product on the market (eg. 12d Model, TUFLOW and SPACE GASS)
- o Reducing network traffic, improving performance of geospatial software running across your network
- o Allowing you to describe data your way with your own customisable attributes
- o Controlling who can access or view data

12d Model Management

Like other large AEC data sets, 12d Model Projects are stored in a folder of files. 12d Synergy is the only Data Management System that can keep track of the 12d Model Project structure.

12d Synergy will also:

- o keep a full audit trail of all versions of a project, allowing you to rollback or look at previous versions with ease
- o help you organise and manage sharing between 12d Model Projects throughout your organisation
- o manage your customisation and keep all your users up to date with the latest version
- o provide easy access to other data in 12d Synergy, such as CAD drawings or survey data, directly from 12d Model
- o take data out of the office and on site to use with products like 12d Field
- o control and log all access to each 12d Model project

Document Management

A typical project has many different documents that flow in and out of your office; word documents, spreadsheets, letters and emails and many more. It can be a nightmare to track where documents have come from and who they have been sent to.

- o Keeping track of all your documents, regardless of the file format
- o Providing direct access to 12d Synergy from common tools like Microsoft Word, Excel and Outlook
- o Tracking all emails that come in via Microsoft Outlook
- o Controlling your document transmittal process by providing an easy to use interface to send, track and report on documents that need to be issued to clients
- o Controlling your document transmittal process by providing an easy to use interface to send, track and report on documents that need to be issued to clients

Job Collaboration

Even in small offices, it can be a challenge to ensure your team members are up to date with the latest information.

12d Synergy can help your teams work more efficiently by:

- o Creating and assigning tasks that model your business processes
- o Allowing your team to communicate about the work they're doing using the in-built Forums and by leaving notes for others to read
- o Sending notifications for any changes that you or others might be interested in



12d[®] Synergy

Support, Training and Licensing

12d Synergy is Australian built and owned and is supported by a dedicated global team. We pride ourselves on our world-class support. You can contact us from our purpose-built Support Portal, on the phone or email.

We will provide you with a full set of detailed guides, as well as training by industry professionals, to get you up and running.

12d Synergy licensing is based on the number of registered users.

Australia

Phone: +61 (2) 9970 7117
Email: sales@12dSynergy.com

New Zealand

Phone: +64 27 477 7787
Email: lane@12d.co.nz

Americas

Phone: +61 (2) 9970 7117
Email: sales@12dSynergy.com

Europe, Middle East & Africa

Phone: +61 (2) 9970 7117
Email: sales@12dSynergy.com



System Requirements

HARDWARE

The minimum hardware requirements are as follows:

Client

CPU: Intel or AMD Processor
RAM: 1GB minimum
HDD: 200MB (for installation),
1GB (for workspace)

Server

CPU: Intel or AMD Processor
(Atom or Athlon Neo not recommended)
RAM: 8GB minimum
(16GB or more is recommended)
HDD: 5.0GB (for installation)

SOFTWARE

The minimum software requirements are as follows:

Operating System

Windows 7 32-bit and later
(Windows 7 64-bit recommended)
Microsoft .NET: 4.5

Database Software

One of the Microsoft SQL Server editions below:

Microsoft® SQL Server® 2008 R2 SP1 -
Express Edition

Free limits on file size, number of cores and functionality, should be adequate in most installations

Microsoft® SQL Server® 2008 R2 SP1 -
Standard Edition

Cost per core used, limits on some functionality

Microsoft® SQL Server® 2008 R2 SP1 -
Enterprise Edition
Cost per core used

Optional:

Microsoft Office: 2010 32-bit or
64bit Microsoft Office Suite